

# The world-leading supplier Of storage and handling solutions

Corrugated industry

Folding carton industry

Flexible packaging industry



bcm transtech as

About bcm transtech .....	3
Fully automatic flat bed die storages .....	4-5
Manual flat bed die storages .....	6-7
Fully automatic rotary die storages .....	8-9
Manual rotary die storages .....	10-11
Fully automatic flexo stereo storages .....	12-13
Flexo stereo storages .....	14-15
Printing sleeve storages .....	16-17
Mobilators - cutting die handling .....	18-19
Fully automatic flexo stereo cleaning .....	20
Transport trolleys .....	21
Mezzanine elevator .....	22
Steel sheet cladding .....	23
International sales agents .....	24



# About bcm transtech



In 1976, bcm transtech a/s was founded by Torben Christiansen, who is the company's general manager. Initially, the company built industrial machines solving issues for several different industries.

In 1997, bcm built its first storage for a local Danish corrugated factory. Afterwards, the company joined FEFCO, the European federation of corrugated board manufacturers. This resulted in the fact that the company's flat bed die storages won a prize for the most innovative technical development. Since receiving the FEFCO award, bcm has continuously been developing the products, so that the company can supply storage and handling solutions for cutting dies and flexo stereotypes in both manual, semi-automatic and fully automatic versions.

Today, bcm transtech is the world-leading supplier of storage and handling solutions for the corrugated industry. A position that is maintained by being first mover in the industry, while continuously improving and inventing new products. The company has installed storage and handling solutions for corrugated, folding carton and flexible packaging factories in more than 40 countries around the world.



## Reasons to choose us as your preferred supplier

### Total supplier of storage and handling solutions

We are capable of fulfilling your storage and handling needs from design to installation.

### More than 20 years of experience

Our solutions are based on solid engineering experience and know-how.

### Wide product assortment

We are the one-stop shop that fulfils your storage and handling needs.

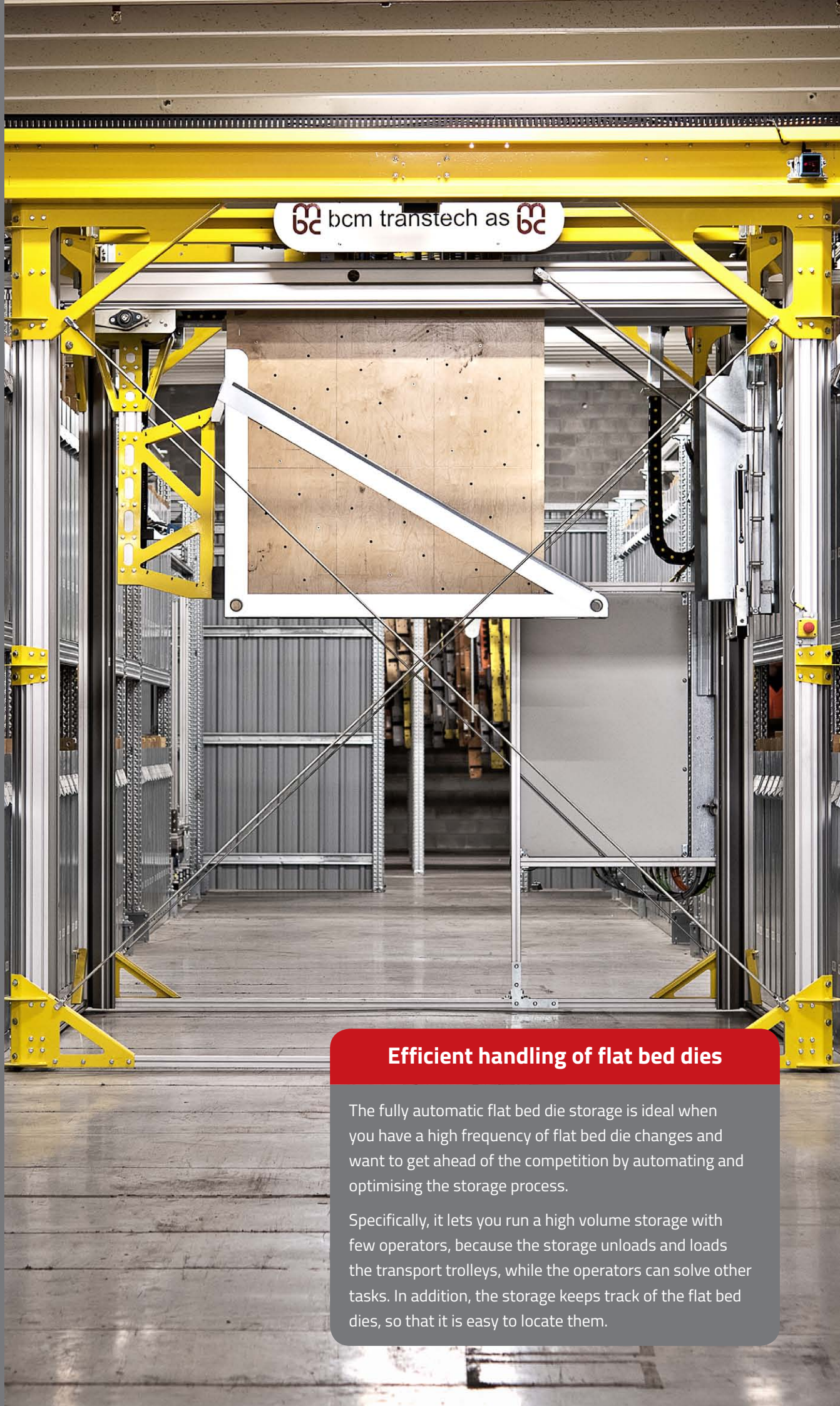
### Custom-made solutions



We customise our solutions, so they fit your exact requirements.

# bcm transtech as

Industrivej 60 ■ 5672 Broby ■ Denmark  
www.bcm.dk ■ bcm@bcm.dk ■ +45 62 63 23 93

Increase automation | Minimise human error | Reduce staff costs



 bcm transtech as 

### Efficient handling of flat bed dies

The fully automatic flat bed die storage is ideal when you have a high frequency of flat bed die changes and want to get ahead of the competition by automating and optimising the storage process.

Specifically, it lets you run a high volume storage with few operators, because the storage unloads and loads the transport trolleys, while the operators can solve other tasks. In addition, the storage keeps track of the flat bed dies, so that it is easy to locate them.

# Fully automatic flat bed die storages



The storages consist of a rack system that holds the design registered foldable cassettes, which contain your flat bed dies of various sizes. The highly customisable rack system ensures safe, easy and efficient storage of your flat bed die sets. In addition, the storages use a fully automatic crane to efficiently transport the cassettes between the storage and the transport trolleys, which are situated in a built-in garage.

- RFID or barcode recognition system.
- Easy operation from computer station.
- Data logging and ERP system connection.
- Interaction with automatic logistics system.
- Capable of having up to 10-meter-tall racks.
- Possible to combine cutting dies and flexo stereotypes.

## Features and benefits for all the flat bed die storages

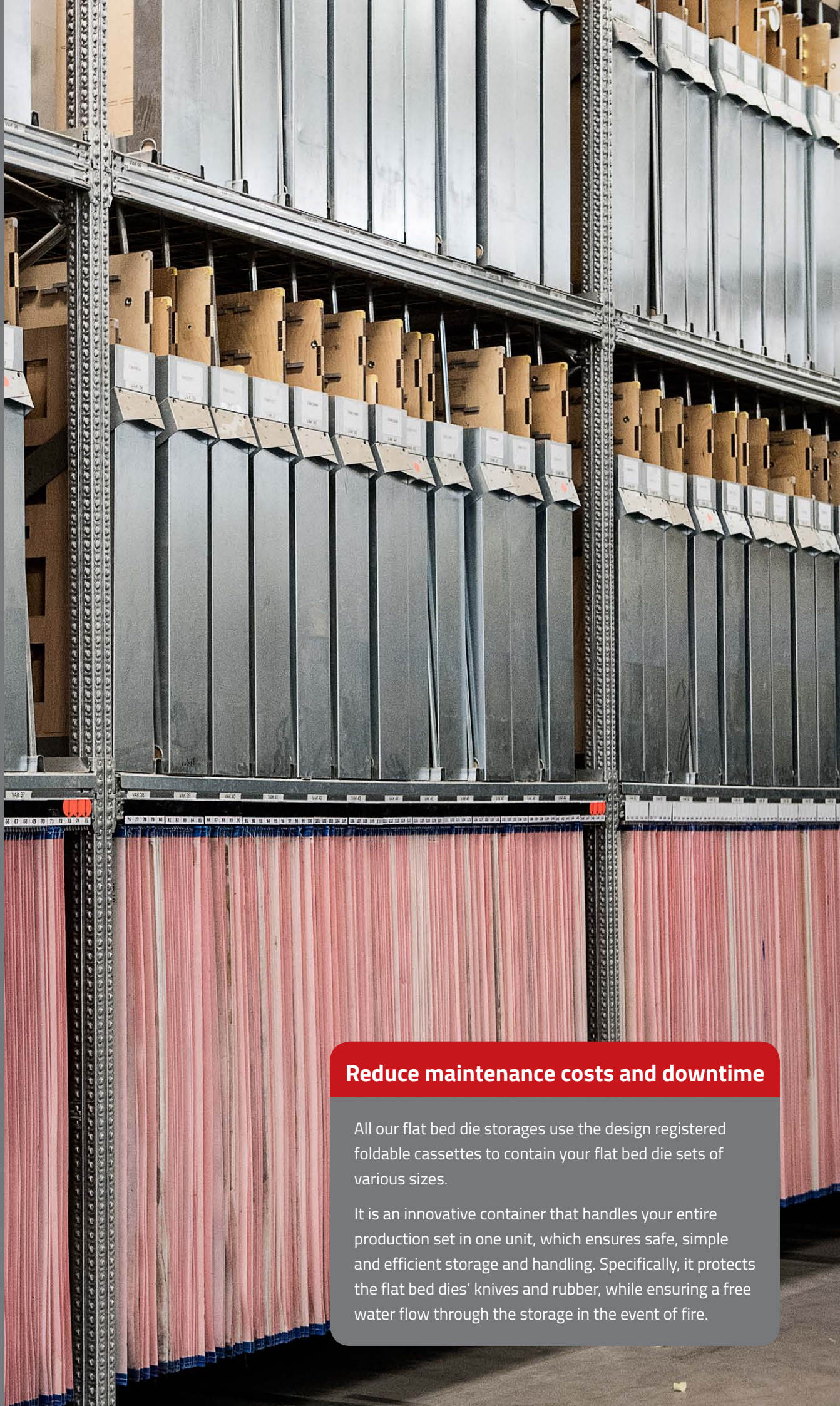
- Easy to extend the storages.
- Modular storage for flat bed dies.
- Extend the lifespan of your flat bed dies.
- User-friendly handling and easy to learn.
- Avoid downtime - keep your dies protected.
- Increase storage capacity.
- Minimise maintenance costs.
- Easy access to all flat bed dies.
- Safe and easy handling of flat bed dies.
- Increase safety standards - avoid heavy lifting.



**bcm transtech as**

Industrivej 60 ■ 5672 Broby ■ Denmark  
www.bcm.dk ■ bcm@bcm.dk ■ +45 62 63 23 93

# Efficient handling of flat bed dies between storage and production



## Reduce maintenance costs and downtime

All our flat bed die storages use the design registered foldable cassettes to contain your flat bed die sets of various sizes.

It is an innovative container that handles your entire production set in one unit, which ensures safe, simple and efficient storage and handling. Specifically, it protects the flat bed dies' knives and rubber, while ensuring a free water flow through the storage in the event of fire.

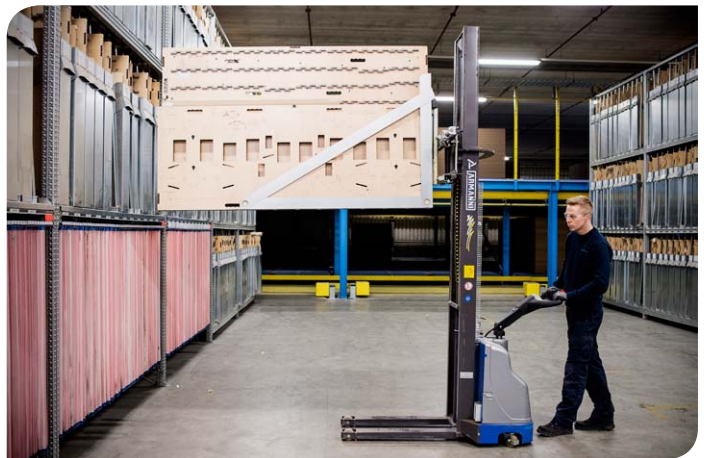
# Manual flat bed die storages

We manufacture and supply three types of manual flat bed die storages. All of them increase production efficiency and safety, because they make the storage process easy, safe and efficient. The storages consist of a highly customisable rack system that holds our design registered foldable cassettes, which contain your flat bed die sets of various sizes. Moreover, the storages use a crane or a motorised lift to handle your flat bed dies.

- The double rack storage uses a gantry crane to handle your flat bed die sets.
- The single rack storage is accompanied by a front mounted crane to handle your flat bed die sets.
- The motorised lift handles flat bed die sets when you need a small storage near the production area.

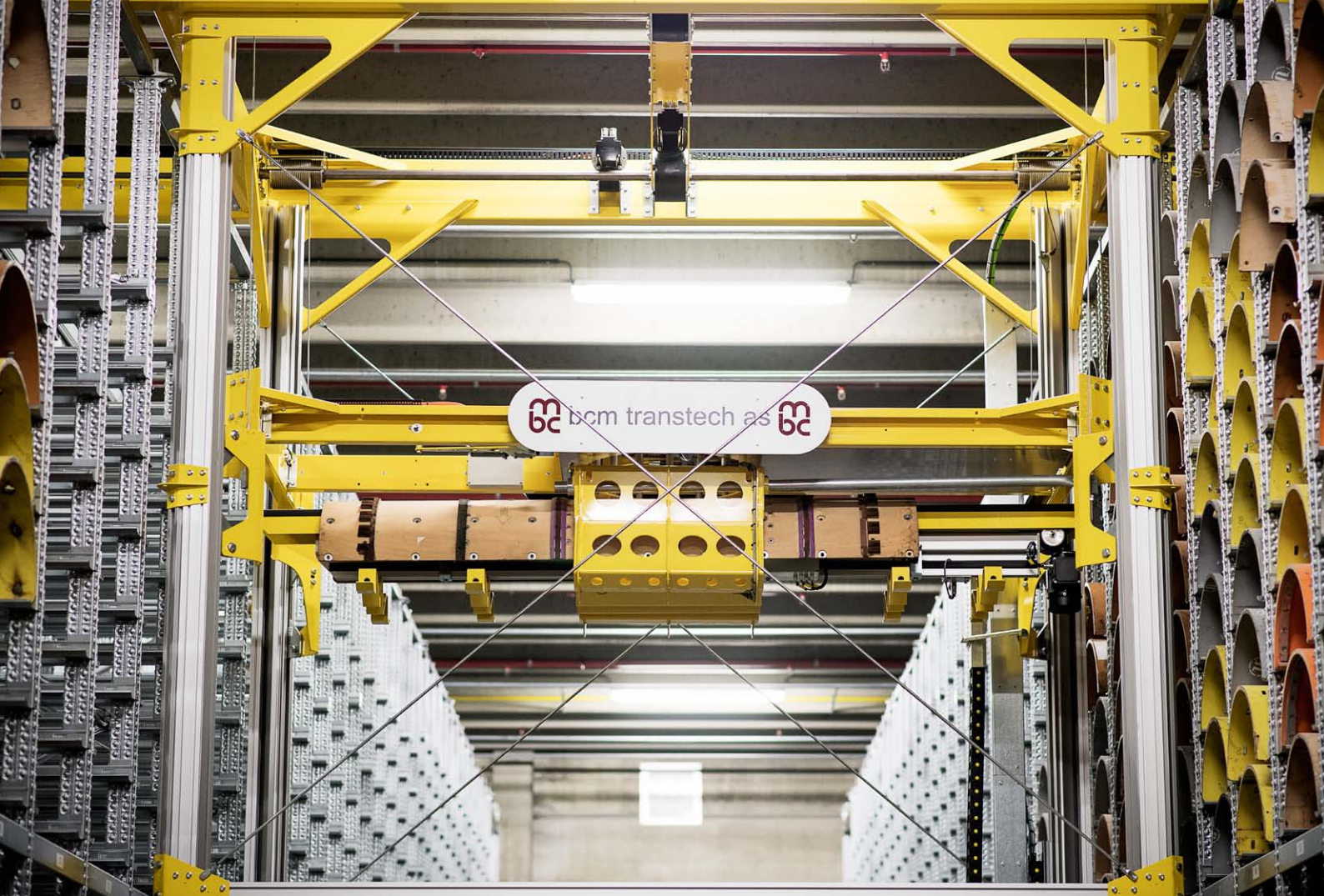
## Features and benefits for all the flat bed die storages

- Easy to extend the storages.
- Modular storage for flat bed dies.
- Extend the lifespan of your flat bed dies.
- User-friendly handling and easy to learn.
- Avoid downtime - keep your dies protected.
- Increase storage capacity.
- Minimise maintenance costs.
- Easy access to all flat bed dies.
- Safe and easy handling of flat bed dies.
- Increase safety standards - avoid heavy lifting.

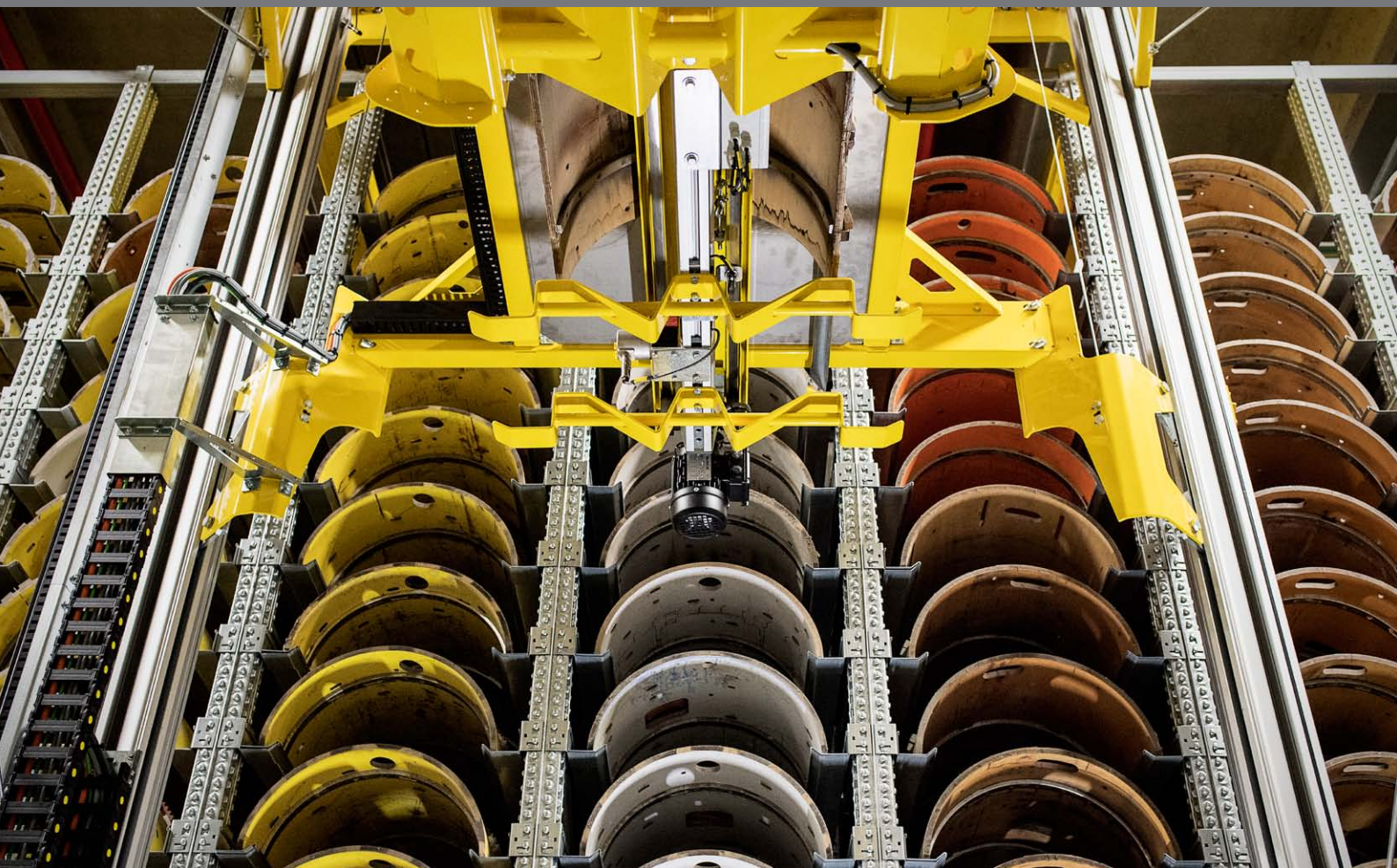


**bcm transtech as**

Industrivej 60 ■ 5672 Broby ■ Denmark  
[www.bcm.dk](http://www.bcm.dk) ■ [bcm@bcm.dk](mailto:bcm@bcm.dk) ■ +45 62 63 23 93



**Increase automation | Minimise human error  
Reduce staff costs**





# Fully automatic rotary die storages

The storages consist of a rack system that holds your rotary dies of various sizes. The highly customisable rack system ensures safe, easy and efficient storage of your rotary die sets. In addition, the storages use a fully automatic crane to efficiently transport your rotary dies between the storage and the transport trolleys, which are situated in a built-in garage.

- RFID or barcode recognition system.
- Easy operation from computer station.
- Data logging and ERP system connection.
- Interaction with automatic logistics system.
- Capable of having up to 10-meter-tall racks.
- Possible to combine cutting dies and flexo stereotypes.

## Features and benefits for all the rotary die storages

- Easy to extend the storages.
- Modular storage for rotary dies.
- Extend the lifespan of your rotary dies.
- User-friendly handling and easy to learn.
- Avoid downtime - keep your dies protected.
- Increase storage capacity.
- Minimise maintenance costs.
- Easy access to all rotary dies.
- Safe and easy handling of rotary dies.
- Increase safety standards - avoid heavy lifting.



**bcm transtech as**

Industrivej 60 ■ 5672 Broby ■ Denmark  
 www.bcm.dk ■ bcm@bcm.dk ■ +45 62 63 23 93

# Efficient handling of rotary dies between storage and production



## Increase production efficiency and safety

All the manual rotary die storages increase production efficiency and safety by optimising the storage process, so that it is easy, safe and efficient to store, handle and transport the rotary dies between storage and production.

They are based on more than 40 years of engineering experience and constructed to ensure maximum durability.

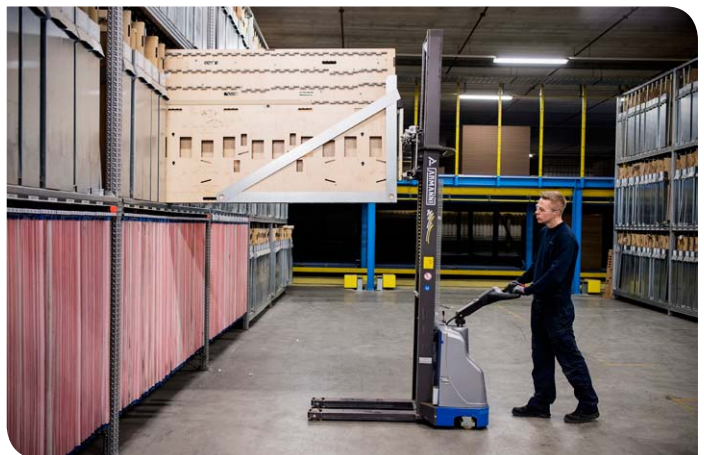
# Manual rotary die storages

We manufacture and supply four types of manual rotary die storages. All of them consist of a highly customisable rack system that holds your rotary die sets. It ensures safe, easy and efficient storage of your rotary dies of various sizes. In addition, the rotary dies can either be handled by hand or by means of a crane or a motorised lift.

- The double rack storage uses a gantry crane to handle the rotary dies.
- The single rack storage is accompanied by a front mounted crane to handle the rotary dies.
- The vertical storage is a price-friendly alternative, because the rotary dies are handled by hand.
- The motorised lift handles the rotary dies when you need a small storage near the production area.

## Features and benefits for all the rotary die storages

- Easy to extend the storages.
- Modular storage for rotary dies.
- Extend the lifespan of your rotary dies.
- User-friendly handling and easy to learn.
- Avoid downtime - keep your dies protected.
- Increase storage capacity.
- Minimise maintenance costs.
- Easy access to all rotary dies.
- Safe and easy handling of rotary dies.
- Increase safety standards - avoid heavy lifting.



**bcm transtech as**

Industrivej 60 ■ 5672 Broby ■ Denmark  
[www.bcm.dk](http://www.bcm.dk) ■ [bcm@bcm.dk](mailto:bcm@bcm.dk) ■ +45 62 63 23 93



## **Increase automation | Minimise human error Reduce staff costs**

The fully automatic flexo stereo storages are ideal when you have a high frequency of flexo stereo changes and want to get ahead of the competition by automating and optimising the storage process. Specifically, they let you run a high volume storage with few operators, because the storages unload and load the transport trolleys, while the operators can solve other tasks. In addition, the storages also keep track of the flexo stereos, so that it is easy to locate them.

We are the most experienced manufacturer of fully automatic storages with more than 15 years of experience, so we are capable of supplying the ideal storage that will increase your factory's efficiency and safety.

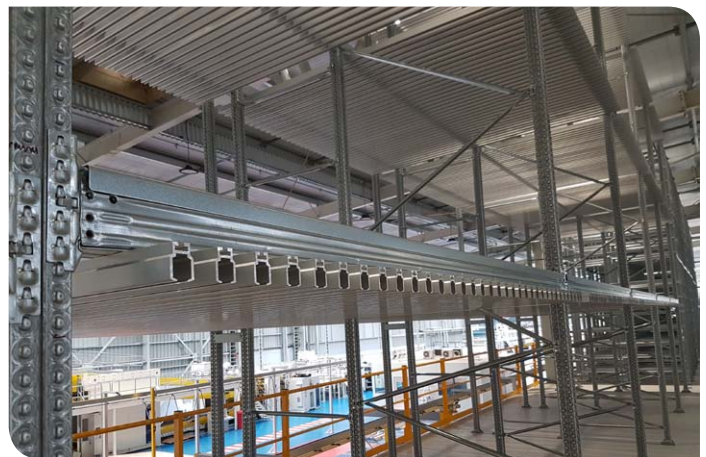
# Fully automatic flexo stereo storages

The storages consist of a highly customisable rack system that holds flexo stereo profiles, which contain 8 or 9 flexo stereotypes of various sizes. It ensures safe, easy and efficient storage of the flexo stereo sets. In addition, the storages use a fully automatic crane to efficiently transport the flexo stereo profiles between the storage and the transport trolleys, which are situated in a built-in garage.

- RFID or barcode recognition system.
- Easy operation from computer station.
- Data logging and ERP system connection.
- Interaction with automatic logistics system.
- Capable of having up to 10-meter-tall racks.
- Possible to combine cutting dies and flexo stereotypes.

## Features and benefits for all the flexo stereo storages

- Easy to extend the storages.
- Modular storage for flexo stereotypes.
- Extend the lifespan of your flexo stereotypes.
- User-friendly handling and easy to learn.
- Avoid downtime - keep your stereotypes protected.
- Increase storage capacity.
- Minimise maintenance costs.
- Easy access to all flexo stereotypes.
- Safe and easy handling of flexo stereotypes.
- Increase safety standards - avoid heavy lifting.



# Efficient handling of flexo stereotypes between storage and production



## Extend the flexo stereotypes' lifespan

All the flexo stereo storages increase production efficiency and safety by optimising the storage process, so that it is easy, safe and efficient to store, handle and transport the flexo stereotypes between storage and production.

The storages are based on more than 40 years of engineering experience and constructed of parts that are carefully chosen to ensure maximum durability.

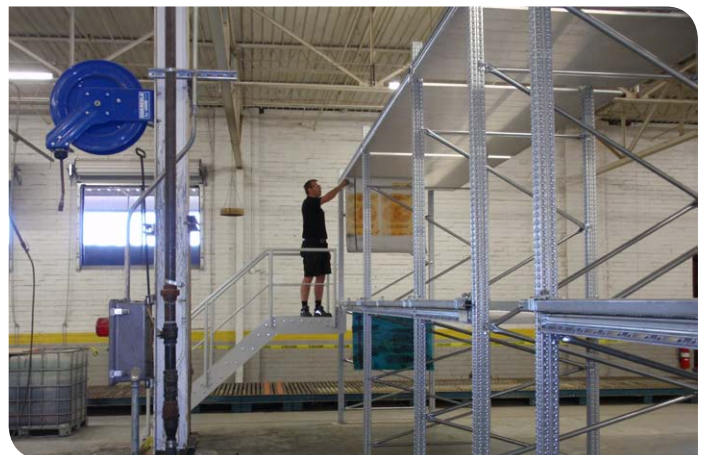
# Flexo stereo storages

We manufacture and supply three types of flexo stereo storages. All of them consist of a highly customisable rack system that holds flexo stereo profiles, which contain either 8, 9, 12, 15, 18 or 21 flexo stereotypes of various sizes. It ensures safe, easy and efficient storage of the flexo stereo sets. In addition, the semi-automatic storage uses a gantry crane to handle the flexo stereotypes, while the manual and UV protective storage handle them by hand.

- The semi-automatic storage is ideal when you need a large and user-friendly storage.
- The manual storage is ideal when you need a compact storage near the production area.
- The UV protective cabinet protects the flexo stereotypes from UV radiation and can easily be moved by forklift.

## Features and benefits for all the flexo stereo storages

- Easy to extend the storages.
- Modular storage for flexo stereotypes.
- Extend the lifespan of your flexo stereotypes.
- User-friendly handling and easy to learn.
- Avoid downtime - keep your stereotypes protected.
- Increase storage capacity.
- Minimise maintenance costs.
- Easy access to all flexo stereotypes.
- Safe and easy handling of flexo stereotypes.
- Increase safety standards - avoid heavy lifting.



# bcm transtech as



## Extend the lifespan of your printing sleeves

To maintain the printing sleeves' print quality in the long run, it is essential to store and handle them properly. The sleeves are fragile, so it is a difficult task to do safely and efficiently. Our storages protect the sleeves' shape and surface by spreading the load onto a larger area of the sleeves, while supporting them in each end.



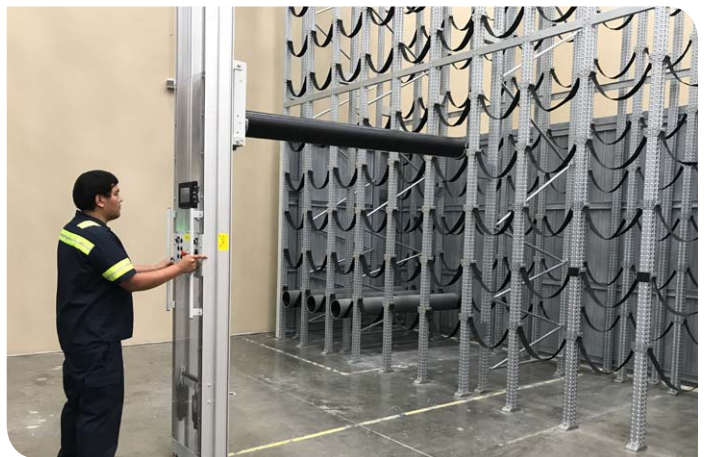
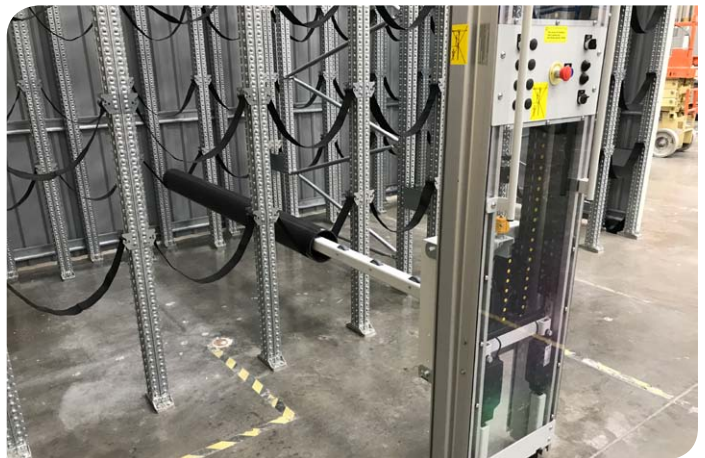
# Printing sleeve storages



The printing sleeve storages consist of a highly customisable rack system that holds the printing sleeves. It ensures safe, easy and efficient storage of printing sleeves with different diameters. In addition, the storages use a gantry crane to safely and efficiently handle the printing sleeves between the storage and the transport trolleys.

## Features and benefits

- Easy to extend the storages.
- Increase production efficiency.
- Single and double rack configurations.
- Avoid downtime - protect your sleeves.
- User-friendly handling and easy to learn.
- Can store sleeves with different diameters.
- Extend the lifespan of your printing sleeves.
- Maximise storage capacity.
- Minimise maintenance costs.
- Protect the printing surfaces.
- Easy access to all printing sleeves.
- Increase health and safety standards.
- Capable of having up to 10-meter-tall racks.
- Safe and efficient handling of printing sleeves.



**bcm transtech as**

Industrivej 60 ■ 5672 Broby ■ Denmark  
www.bcm.dk ■ bcm@bcm.dk ■ +45 62 63 23 93

One operator can change the heaviest cutting dies single-handedly



### Increase production efficiency and safety

The Mobilators for flat bed and rotary die handling are ideal solutions when you want to increase safety and efficiency during setup. Specifically, they make it possible for one operator to change cutting dies single-handedly.

In addition, they will help you comply with today's health and safety regulations, because almost all formats of cutting dies exceed the maximum weight that a single operator is allowed to carry.

# Mobilators - cutting die handling



The Mobilators for flat bed and rotary die handling are innovative crane systems that optimise the operators' efficiency and safety when setting up the converting machine. They are adapted to fit the converting machine and the factory's layout, so that it is easy, safe and efficient for the operator to change cutting dies single-handedly. Moreover, the operators can easily handle the cutting dies manually or by remote control.

## Flat bed die Mobilators

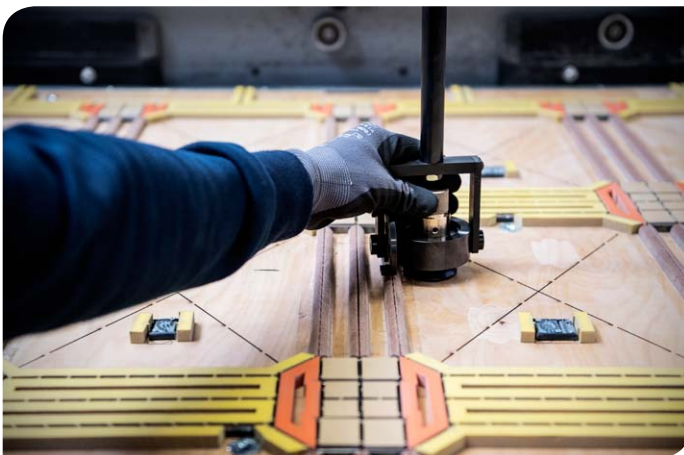
- Standard configurations.
- Can handle cutting and stripping dies.
- Easy to place the flat bed dies on the turn table.

## Rotary die Mobilators

- Adapted to fit individual machines.
- Suitable for all formats of rotary dies.
- Easy to place the rotary dies on the cylinder.

## Features and benefits

- Increase production efficiency.
- Increase safety - avoid heavy lifting.
- User-friendly handling and easy to learn.
- Avoid damage to the tools during setup.
- Safe and efficient handling of cutting dies.
- Avoid downtime - keep your dies protected.



**bcm transtech as**

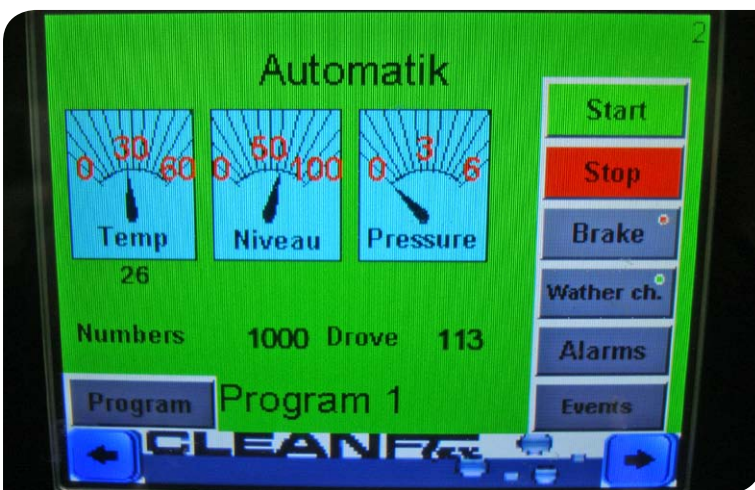
Industrivej 60 ■ 5672 Broby ■ Denmark  
www.bcm.dk ■ bcm@bcm.dk ■ +45 62 63 23 93

# Fully automatic flexo stereo cleaning

The best print quality is obtained through well-maintained flexo stereotypes. The CleanFlex is a fully automatic washing machine for flexo stereotypes in both big and small formats. It outperforms manual flexo stereo cleaning, because it thoroughly cleans both the stereotypes' frontside and backside by applying an optimal cleaning pressure and rinsing flow through a combination of rotating brushes, water, soap and anti-foam. In the end, it also blow-dries the flexo stereotypes, so they can be stored right away. On this basis, the CleanFlex takes care of your flexo stereotypes, because the cleaning process yields the best results every time.

## Features and benefits

- Environmentally friendly
- Easy and reliable operation.
- User-friendly handling and easy to learn.
- Maintain high print quality in the long run.
- Minimise maintenance costs.
- Low noise level below 80 dB.
- Twice as fast as manual washing.
- Minimal consumption of water and energy.



# Transport trolleys



The transport trolleys are constructed to ensure safe and efficient transport of cutting dies, flexo stereotypes, ink buckets and printing sleeves between storage and production. They can be designed to fit the customers' requirements and built to contain both cutting dies, flexo stereotypes, printing sleeves and ink buckets, so the operators can reduce the transportation time between storage and production. Specifically, the operators have easy access to all the tools, so that the trolleys can be efficiently loaded and unloaded.

## Features and benefits

- User-friendly handling.
- Increase production efficiency.
- Easy to load and unload the tools.
- Increase safety - avoid heavy lifting.
- Easy access to all the tools.
- Safe and efficient transport.
- Standard and custom configurations.
- Can transport dies, stereotypes, sleeves and ink buckets.



**bcm transtech as**

Industrivej 60 ■ 5672 Broby ■ Denmark  
www.bcm.dk ■ bcm@bcm.dk ■ +45 62 63 23 93

# Mezzanine elevator



A mezzanine elevator is the ideal solution when you need to transport cutting dies, flexo stereotypes or printing sleeves between floors in the factory. Specifically, the elevator ensures easy, safe and efficient transport of production material between storage and production when they are situated on different floors.

## Features and benefits

- Special trolley lock ensures safe operation.
- User-friendly handling and easy to learn new operators.
- Transports cutting dies, flexo stereotypes and printing sleeves.
- Increase production efficiency.
- Extend the lifespan of your tools.
- Increase health and safety standards.



**bcm transtech as**

Industrivej 60 ■ 5672 Broby ■ Denmark  
www.bcm.dk ■ bcm@bcm.dk ■ +45 62 63 23 93

# Steel sheet cladding

Hygiene, health and safety requirements or factory aesthetics may demand that the storage is covered. In these cases, we cover your bcm storage with steel sheet cladding. Normally, we use the standard colour light grey, which is similar to RAL 7044. It works great in dusty environments, but other colours are available on request.

## Features and benefits

- Hygiene and health requirements.
- Protect your cutting dies from dust.
- Factory aesthetics - clean factory layout.
- Increased safety - tools are secured in the storage.



# Contact us



## **Denmark, Norway, Finland, Latvia, Estonia and Lithuania**

bcm transtech as  
Industrivej 60  
5672 Broby, Denmark  
Phone: +45 62 63 23 93  
bcm@bcm.dk

## **France, Spain and Portugal**

Propco SAS  
146 rue des Vignes  
26400 Eurre, France  
Phone: +33 (0)4 75 76 77 26  
propco@propco-sas.com

## **United Kingdom and Ireland**

BHS Corrugated Ltd.  
The Granary, Weston Road, Congresbury  
Bristol, BS49 5EB, United Kingdom  
Phone: +44 (0) 19 34 83 99 00  
sales@bhs-corrugated.co.uk

## **North America / USA**

Hitek Equipment Inc.  
8920 58th Place #700  
Kenosha, WI 53144, USA  
Phone: 001 262 842 1700  
sales@askhitek.com

## **Australia and New Zealand**

Paper Converting Machinery Specialists Pty. Ltd.  
PO Box 740, Eltham  
Victoria 3095, Australia  
Phone: +61 (03) 9714 8073  
sales@pcms.com.au

## **South Africa**

Chris Ward Corrugated Limited  
Mellstone, Wigglesworth, Skipton  
North Yorkshire, United Kingdom, BD23 4RP  
Phone: +44 (0) 17 29 84 02 09  
sales@chrisward.eu

## **Turkey**

Dolunay Gıda Sanayi ve Ticaret Ltd Şti Kasap  
Sok. Gamze Apt. No:19 Kat:1 D:1  
Esentepe 34394 Şişli – Istanbul, Turkey  
Phone: 02 12 288 60 54  
ibrahim.caglar@dolunayltd.com

## **Armenia, Azerbaijan, Belarus, Kazakhstan, Russia and Turkmenia**

Best For Gofra  
Москва, Ангелов переулок 6, офис 160  
Россия, Russia  
Phone: +7 495 9026797  
bestforgofra@mail.ru

## **Germany, Switzerland and Austria**

Corrugated Solutions  
Hahngericht  
D-58135 Hagen, Germany  
Phone: +49 (0) 17 17 71 45 54  
matthias.olbrich@corrugated-solutions.com

## **Sweden**

BORIN AB  
Spårgatan 2, Box 656 SE-601 15  
Norrköping, Sweden  
Phone: +46 11 19 06 30  
Info@borin.se

## **Benelux, Czech Republic and Poland**

Corrurysystems  
Nevenlandsehof 10  
7312 EX Apeldoorn, Holland  
Phone: +31 (0) 55 36 02 077  
mtermaat@corrurysystems.nl

## **Italy**

Corrpartners srl  
Via A. Brofferio 6, 00195, Rome, Italy  
Phone: +39 335 7165398  
Phone: +39 348 0513174  
corrpartners.sales@gmail.com

## **Ukraine**

Galpolyflex  
79059, м. Львів, вул. Перфецького, 21/58, Ukraine  
Phone/Fax: 032 263 73 82  
Mobile: 067 370 78 10  
od@gpflex.com

## **Israel**

CartGO Ltd.  
Halivne 9 , Timrat 36576, Israel  
Phone: +972 (0) 54-2273398  
cartgo@012.net.il

# bcm transtech as

Industrivej 60 ■ 5672 Broby ■ Denmark  
www.bcm.dk ■ bcm@bcm.dk ■ +45 62 63 23 93